

Morgan Lovell

Welcome to

The Future of Workplace Technology



Morgan Lovell

A warm welcome from



Richard Williams
Morgan Lovell



Hannah Nardini
WKspace



Jasper Squier
Intergalactic

Get the most from today



Works best in
Chrome, Edge,
Safari or Firefox



We'll send around
a recording and
slides after



Ask any questions
and participate in
the polls

We're the UK's leading
office design, fit out and
refurbishment specialist.



Morgan Lovell



Hannah Nardini
Managing Director
WKspace

WKspaceTM

How and where we work
has fundamentally changed
since March 2020

The purpose of the office is
changing too

**'70% of
employees say
they want to
work from
home 3-5 days
per week'**

-WKspace research
of 127,500 people



Why visit the office?

- Collaboration
- Meetings
- Socialising



The experience of being in the office must be outstanding



Before you set off

- Travel news
- Typical commute time
- Review the plan for your day
- Book required spaces



While travelling

- Book cycle storage space
- Check how busy the showers are
- Pre-order your coffee
- Let people know your ETA

On arrival

- Open doors
- Notify others of your arrival
- Navigation routes



On arrival

- Book, find and open a locker
- Find/book the most suitable space:
 - Noise levels
 - Air quality
 - Light levels
 - Colleagues
 - Furniture
- Notify others of your location





During your day

- Check how busy facilities are
- Avoid spaces that are out of order

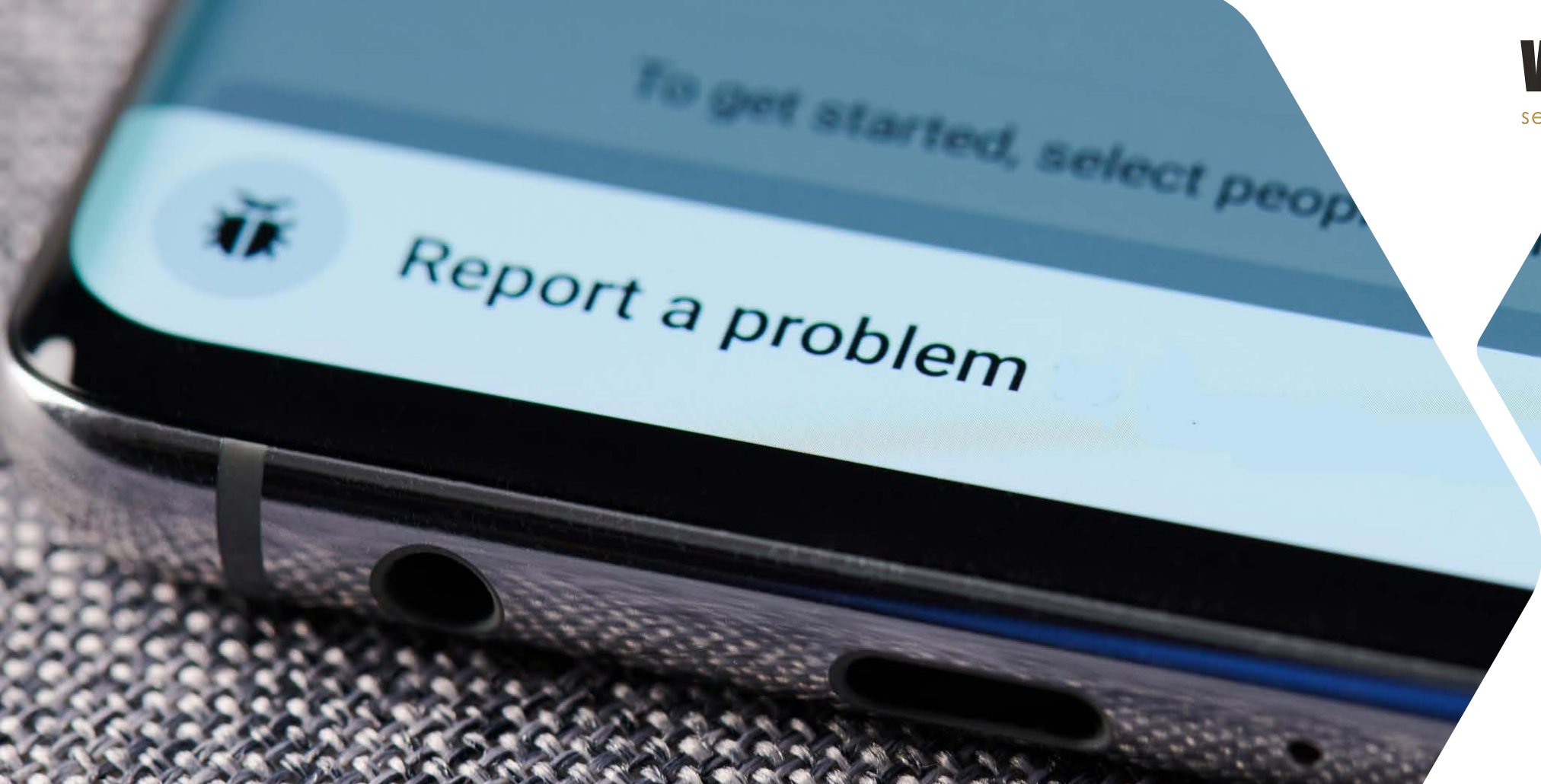


Meeting room booking:

- Find suitable space
- Control your booking
- Check in/out
- Order catering
- Choose room layout
- Report issues
- Control lighting & temperature
- Manage AV system

Notifications:

- Inform people of events and initiatives
- Send reminders on habits and behaviours




To get started, select people

Report a problem

invite.

Report issues:

- Notify relevant teams of issues in real-time
- Check status of issues



janv	\$ 31 555,00	\$ 82 710,00	\$ 35 338,00
févr	\$ 56 032,00	\$ 43 685,00	\$ 37 128,00
mars	\$ 88 728,00	\$ 34 549,00	\$ 52 101,00
avr	\$ 27 862,00	\$ 15 001,00	\$ 7 307,00
mai	\$ 21 764,00	\$ 9 822,00	\$ 60 496,00
juin	\$ 53 225,00	\$ 30 359,00	\$ 29 905,00
juil	\$ 16 477,00	\$ 27 176,00	\$ 92 545,00
août	\$ 47 572,00	\$ 15 818,00	\$ 42 796,00
sept	\$ 41 374,00	\$ 39 266,00	\$ 11 922,00
oct	\$ 71 259,00	\$ 82 336,00	\$ 43 820,00

Continual monitoring:

- Building Management System
- Occupation levels
- Behaviours

Sensors:

- Temperature
- Lighting levels
- Humidity
- CO2
- Noise levels
- Occupation levels

Everyone Matters

Inclusive experience:

- Parity
- Seamless digital integration
- Driving and reinforcing culture change



Perpetual learning/engagement:

- User friendly interface
- Respond to changes in behaviours
- Monitor mood and sentiments
- Feedback loops
- Continual digital evolution

Morgan Lovell



Jasper Squier
Managing Partner
Intergalactic



About Intergalactic

We are a Creative Technology Company.

Established in 2004, we've successfully delivered over **870 digital solutions** for clients across the globe.



Award-Winning
Projects



Trusted by
Enterprise Brands



Strategy, Design &
Tech Minded



Global Reach



Advanced Tech
Specialists



Experience
Focused

About Intergalactic

Our expertise has evolved across 4 key sectors:



**Enterprise
organisations**



**Real estate
marketing**



**Education
institutions**



Event Tech

Hundreds of successful projects with great brands



A man with short dark hair, wearing a blue and white striped shirt over a light blue t-shirt, is seated at a dark wooden desk. He is looking down at a laptop, holding a yellow pencil in his right hand and a white piece of paper in his left. On the desk, there is a black smartphone and a green highlighter. In the background, two young children are sitting on a patterned rug, playing with papers and markers. A dark wooden coffee table with various items on it is also visible in the background.

COVID-FORCED CHANGES IN OPERATIONS AND BEHAVIOURS

ENTIRE INDUSTRIES HAVE ADAPTED TO WFH, BUT WHAT ARE THE LONG-TERM IMPACTS ON WELLBEING, FAMILY PRESSURES AND SOCIAL ENGAGEMENT WITH PEOPLE IRL.

BETTER VIRTUAL MEETINGS & COLLABORATION

We're all now used to laptop based virtual meetings and their shortcomings.

How can we create a better experience that can be more collaborative, more spontaneous and less tiring?



Liz Eswein

Pasha Karasev

Erik Berlin

Courtney Nash

forrestbrown

Peter Pham

NickHallam

John-Henry Scherck

Casey

MYKIGAI

Toni Cowan-Brown

Shira Ovide

ryanl

Andrew Hutchinson

ben

Hunter

Paul

ivonique woodard

stevenlevy

Hal

Jess BookRetina

mliu

Anisha Sunkerneni

Sarah Frier

Ryan Kuiken

HIGHER QUALITY VIDEO & SOUND

Creating the right impression visually, being heard effortlessly, presenting with confidence.

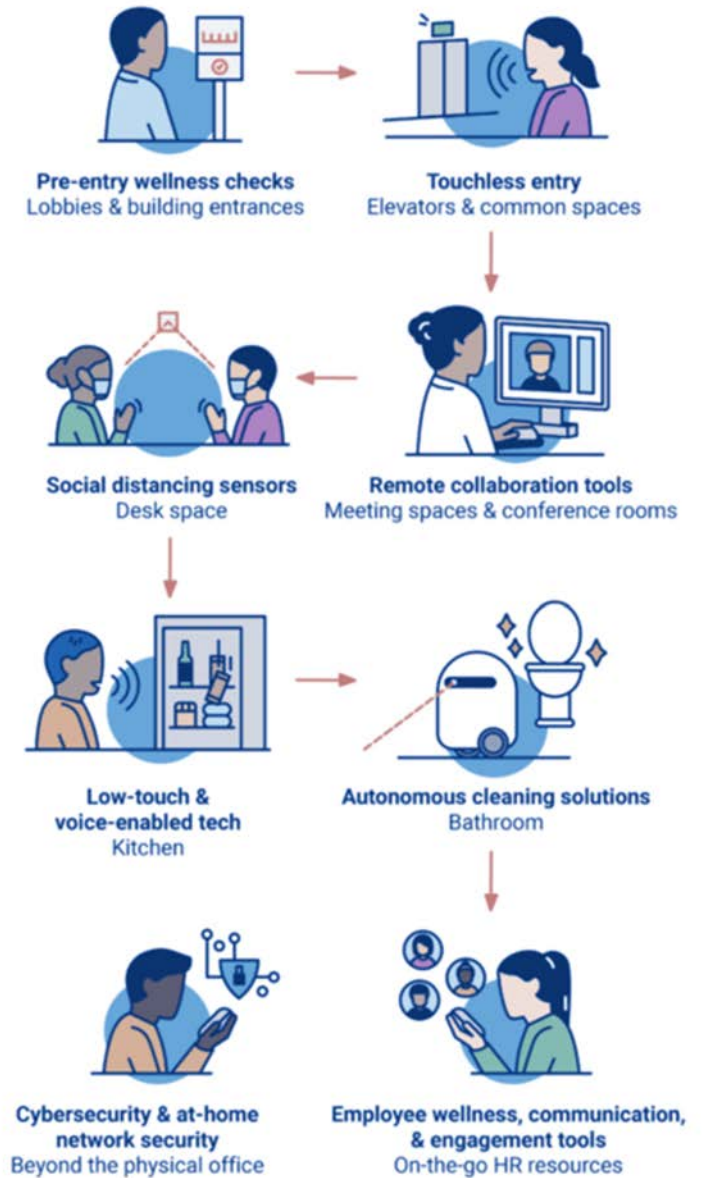
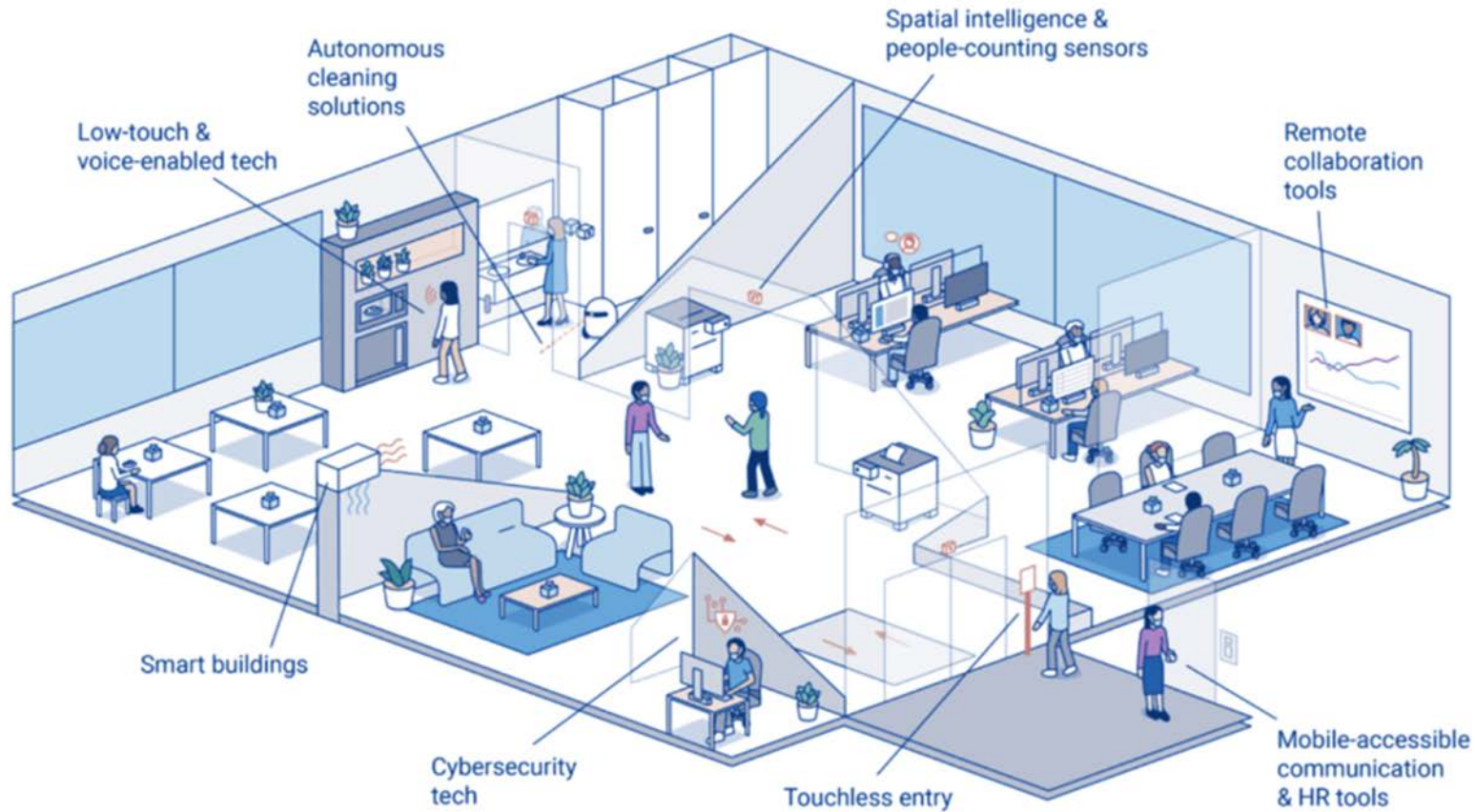
Thinking of desk installations or Presentation Booths with;

- KEY LIGHTS,
- CAMERAS WITH A QUALITY LENS
- QUALITY MICROPHONES
- MULTIPLE SCREENS



Technology in the workplace

The New Tech-Enabled Office Journey





VIRTUAL / PHYSICAL MEETING SUITES

Cisco's Telepresence concept didn't quite make it at the time. But perhaps we're now ready for a more evolved concept, integrated fully into the fabric of a meeting room?



COLLABORATION Vibe supports multi location collaboration with extensive 3rd party app support.



POLL

tubular

Glassy water

WHAT CAN IMMERSIVE TECH OFFER TO ASSIST COLLABORATION, AND HOW CAN OFFICES ACCOMMODATE THIS NEW COMPUTING HARDWARE?

Shot real time in Spatial

A man with a beard, wearing a black polo shirt and a Microsoft HoloLens 2 headset, is shown in profile in a factory setting. He is gesturing with his right hand as if interacting with a virtual object. The background shows industrial equipment, including a car lift and various pipes and lights.

MIXED REALITY HEADSETS

OFFERS NEW REMOTE TRAINING AND COLLABORATION CAPABILITY UTILISING POWERFUL 3D RENDERING AND OBJECT RECOGNITION BUT COMES WITH A HIGH PRICE POINT



HoloLens 2



POLL



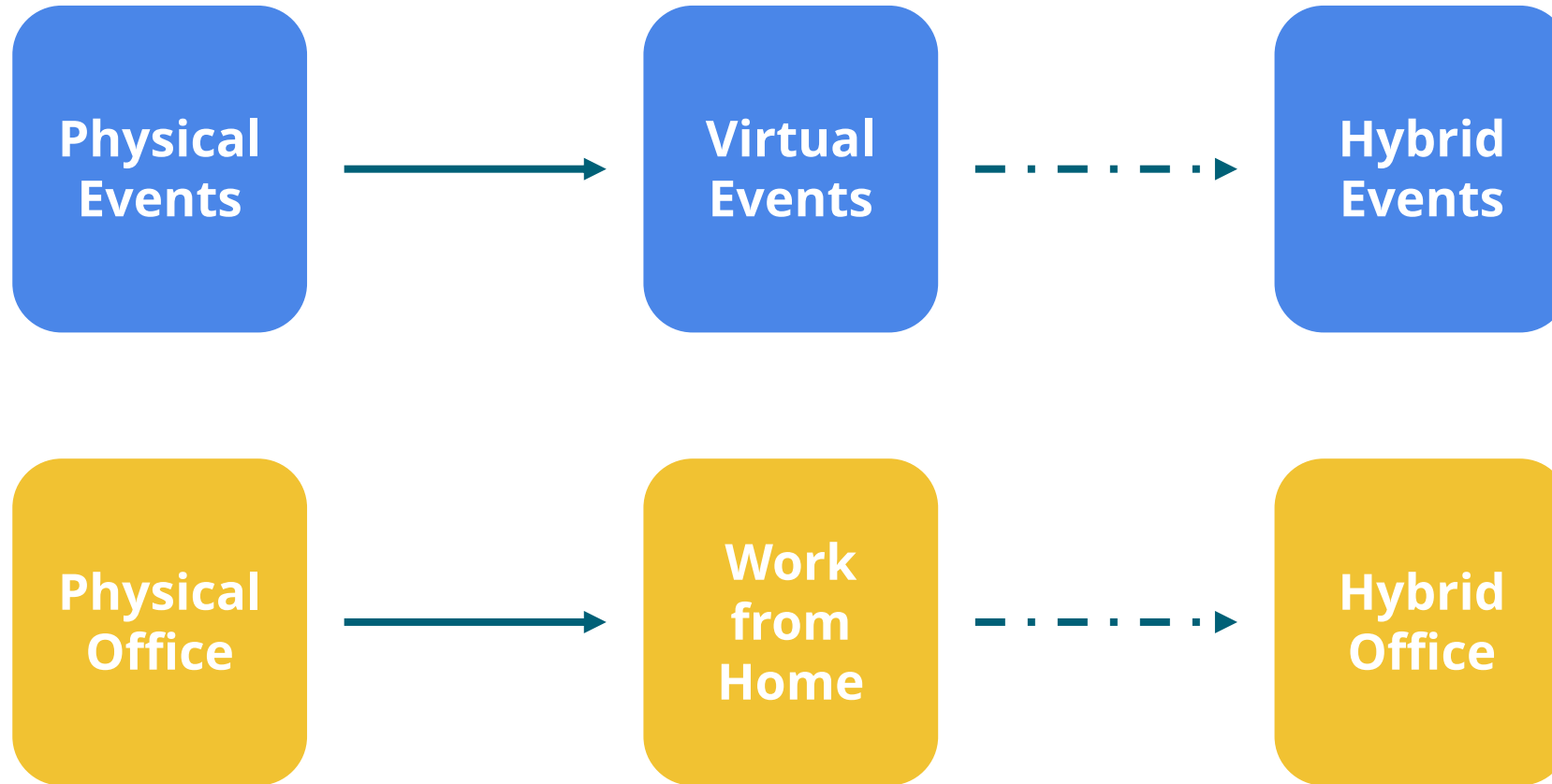
Anand's Screen

COLLABORATIVE FOCUS
AVATARS REPRESENT COLLEAGUES
£299 / HEADSET - ACCESSIBLE PRICE

@workplace
by facebook

oculus

Put the focus on your people, with an event approach



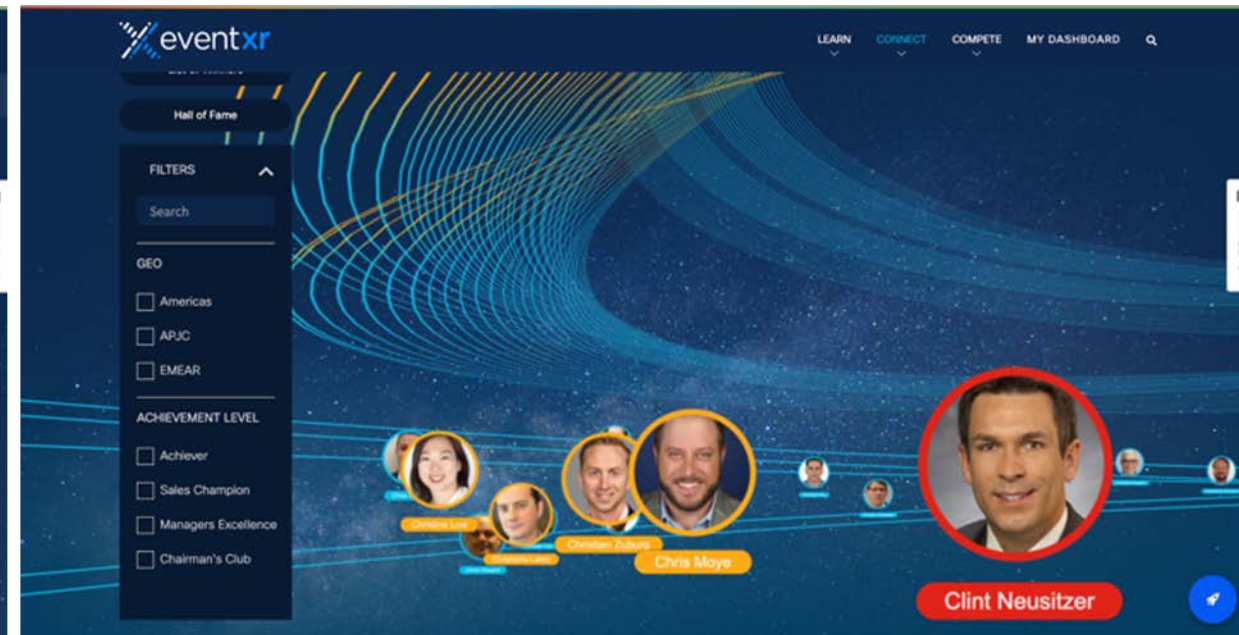
Put the focus on your people, with an event approach

Improved
staff
engagement

Gamification

Set team
targets

Incentivise
return to
office with
rewards



The intelligent workplace



Corporate Unified Communications & Collaboration

- Email
- Slack
- Teams
- Webex
- Zoom
- Phone

AI-based analysis of staff interaction data

- Quantitative (heuristic) analysis of who communicates with whom
- Qualitative (AI) topics and teams and status
- Dynamic team identification

Intelligent workplace

- Recommendation system for best office space to use
- Dynamically allocate days and times to comply with Covid-safe guidelines
- Integrate with IoT building & security systems



Staff use existing communication tools “as normal”



Identify in-office meeting needs and ideal team meeting rhythm



Covid-safe optimised allocation of office space for team efficiency

Let's take a
look at the
poll results
and questions



Keep in touch



Hannah Nardini
Managing Director
hannah@wkspace.co.uk



Jasper Squier
Managing Partner
jasper@intergalactic.com

Thank you

A survey will appear after the session and we'd love to hear what you thought.

Check your inbox for a recording of today's presentation soon.

